

## **"ethereal contradictions"**

**"Ethereal contradictions" present a captivating exploration of the interplay between biological and geometric forms, echoing the artistic language established in the previously described sculptures. These artworks embrace the concept of great contradictions, where organic shapes coexist and intersect with precise geometric elements, inviting viewers to contemplate the harmonious tension between these contrasting aesthetics.**

**The canvas serves as a versatile and dynamic medium for Ritzmann's artistic expression. On these surfaces, the artist meticulously applies layers of paint, creating a foundation that becomes the stage for the unfolding dialogue between organic and geometric shapes. The canvases become visual landscapes where the intricate dance between these contrasting forms takes place.**

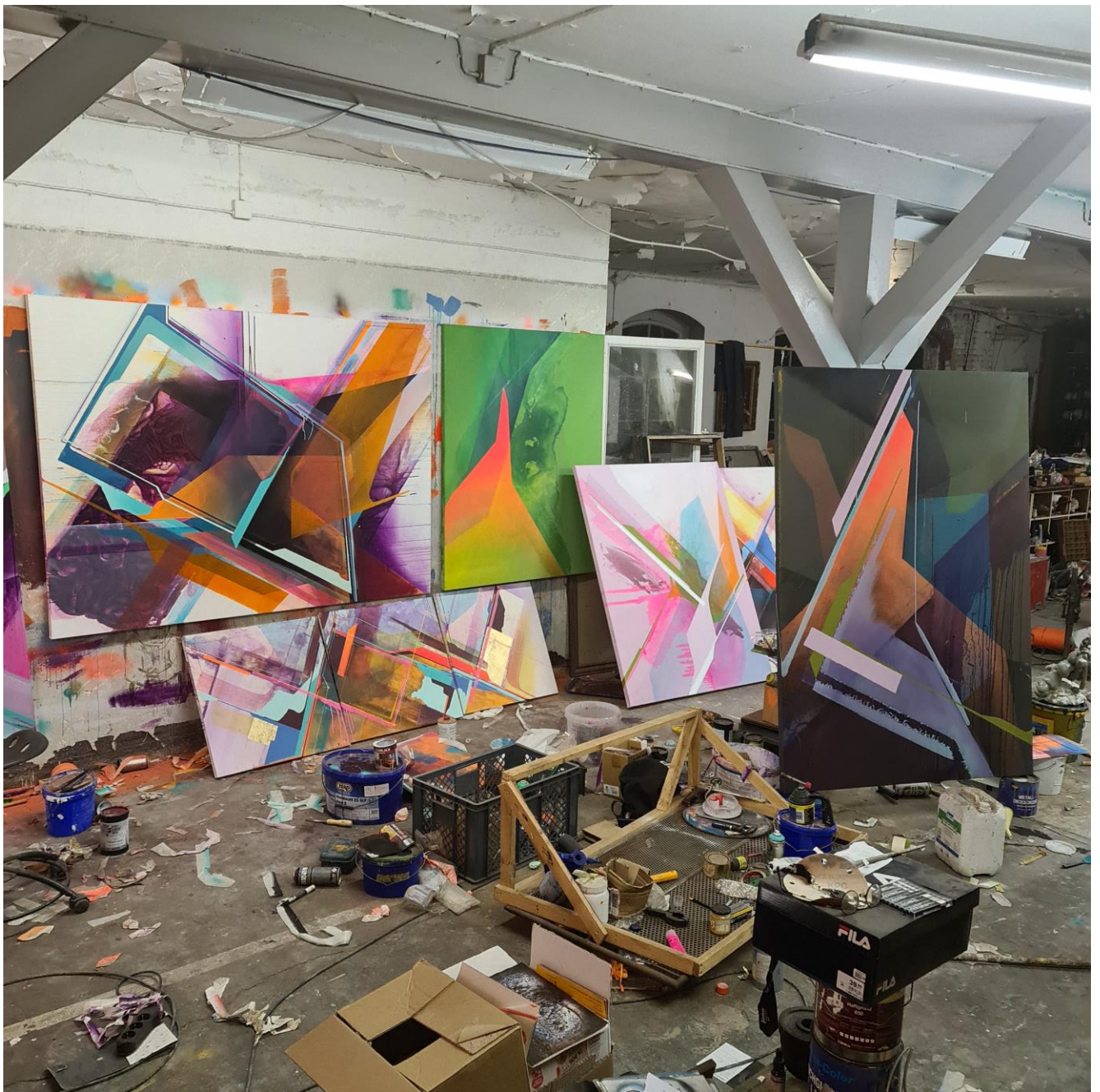
**In Ritzmann's canvas works, the organic shapes evoke the beauty and complexity of the natural world. These shapes may resemble elements from the realms of biology, such as flora, fauna, or cellular structures. Their fluid contours and vibrant colors imbue the artworks with a sense of life and movement, capturing the essence of the organic realm.**

**Contrasting with these organic shapes, Ritzmann introduces precise geometric elements. These shapes manifest as clean lines, angles, and symmetrical forms, establishing a sense of order and structure within the composition. The geometric elements, often inspired by the previously described sculptures, represent a departure from the organic fluidity, introducing a contrasting visual language that symbolizes rationality and human-made constructs.**

**The juxtaposition of biological and geometric shapes in Ritzmann's canvas works is deliberate and intentional. It prompts viewers to explore the inherent contradictions and the harmonious tension that arises when these contrasting elements coexist. The organic shapes speak to our innate connection with the natural world, reminding us of our biological origins and the complexity of life. On the other hand, the geometric shapes allude to our human desire for order, structure, and rationality.**

**Through the convergence of these contrasting shapes, Ritzmann's canvas works embody a profound exploration of the complex relationship between nature and human-made constructs. The artist invites viewers to reflect on the intersections, overlaps, and contradictions between the biological and the geometric realms, prompting a contemplation of our own existence and the dichotomies inherent in our perception of the world.**

**By employing the artistic language established in the earlier sculptures, Ritzmann's canvas works create a cohesive visual narrative across different mediums. The interplay between biological and geometric shapes establishes a dynamic visual dialogue, offering a deeper understanding of the inherent contradictions and harmonies that exist within our natural and constructed environment.**







„expedia fiveseven

acrylics on canvas

195x145cm

2023





„seventimesseven“

acrtylics on canvas

195x145cm

2023





„natriumhydrogencarbonat“

acrylics on canvas

195x145cm

2023





„nightcall“

acrylics on canvas

145x100cm

2021





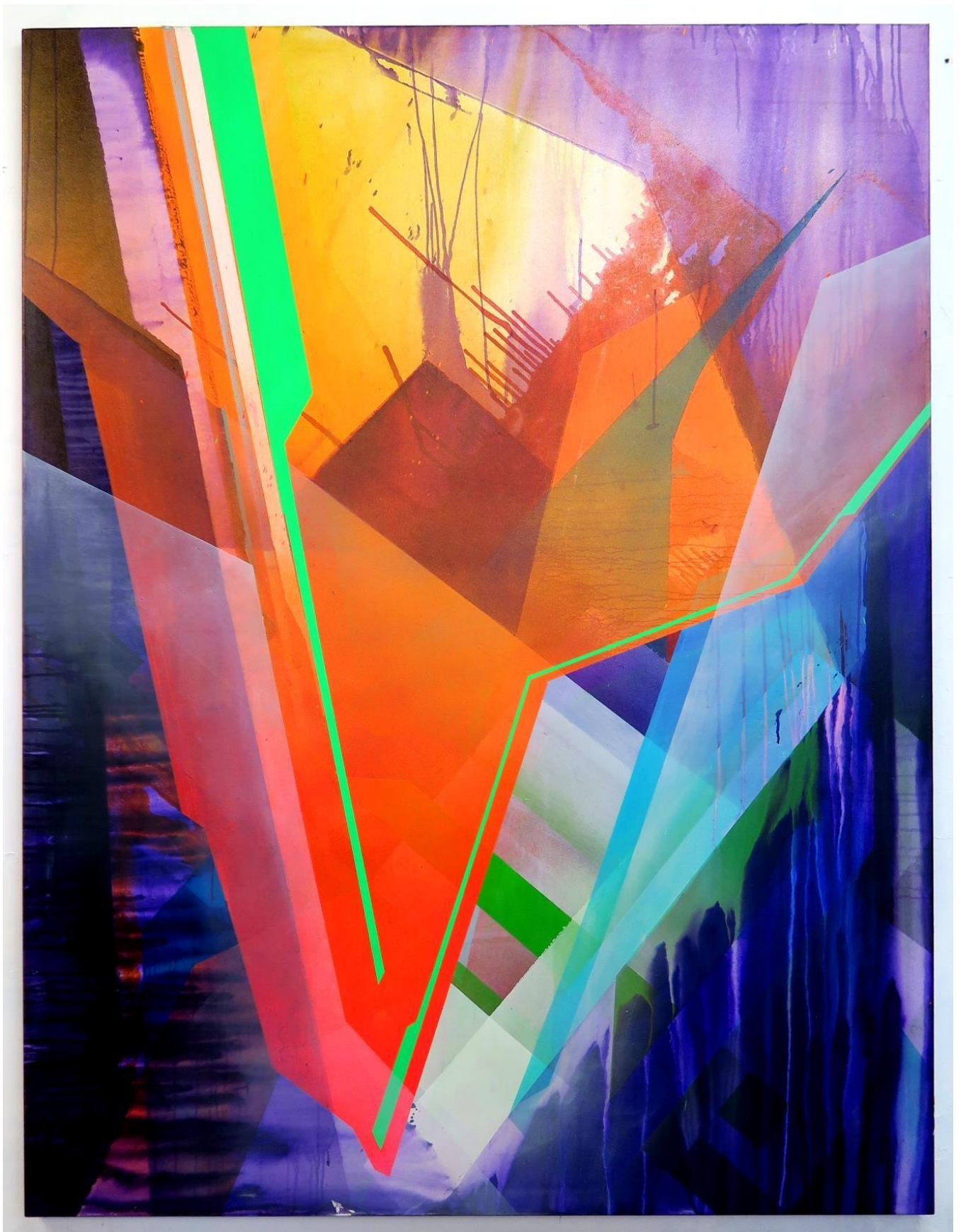
„Vertigo“

acrylics on canvas

195x145cm

2021





„downtempo“

acrylics on canvas

195x145cm

2021





„footloose“

acrylics on canvas

200cm x 145cm

2020





„mountain dew“

acrylics on canvas  
195cm x 145cm

2021



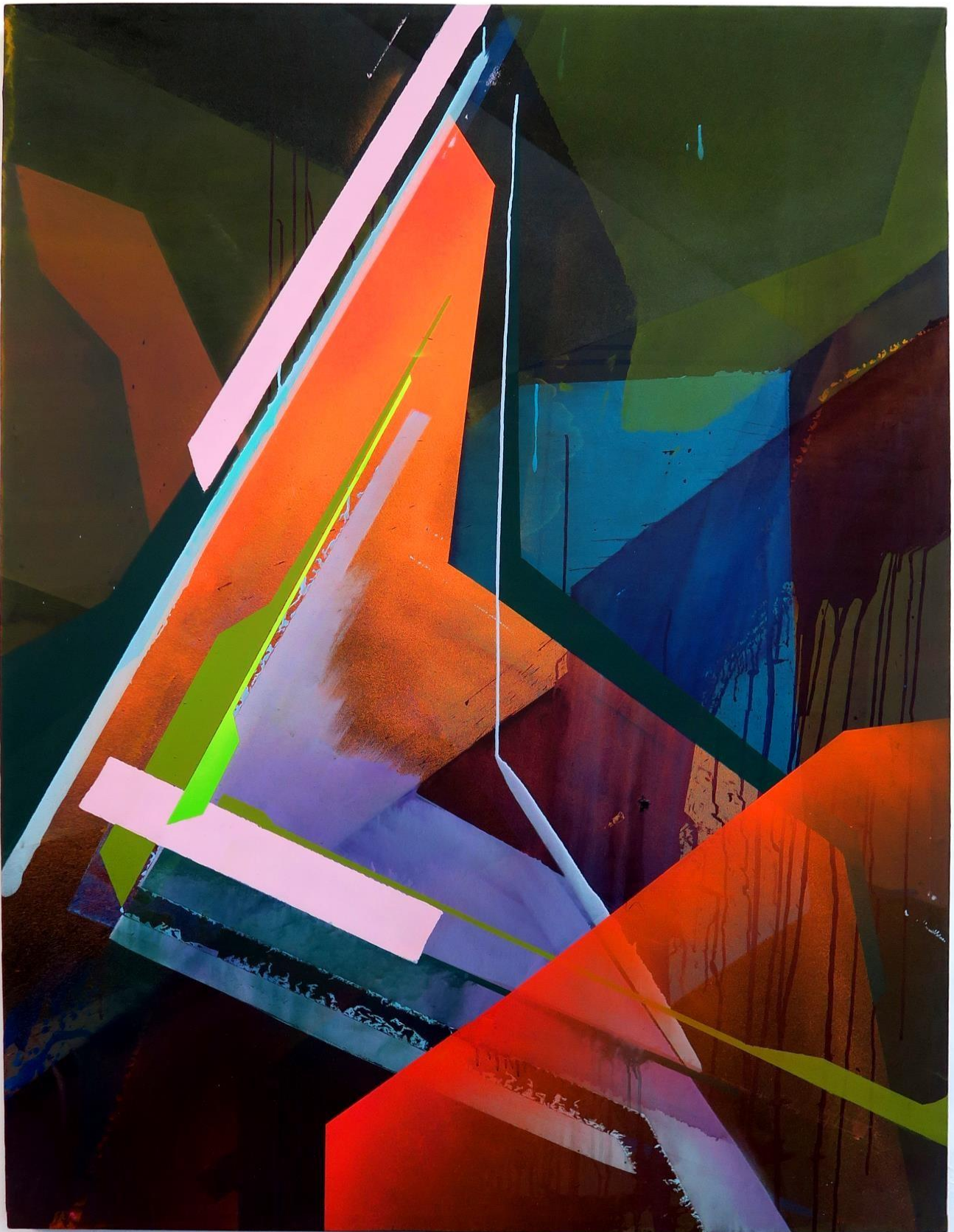


„winhgsuit“

acrylics on canvas  
195cm x 145cm

2021





„greenwich mean time“

acrylics on canvas  
185cm x 125cm

2021





„needle“

acrylics on canvas

195cm x 145cm

2021





„as the sea around a rock“

acrylics on canvas  
195cm x 145cm

2021





„fractureline“

acrylics on canvas

165cm x 145cm

2020





„its miami motherfucker“

acrylics on canvas  
145cm x 120cm

2021





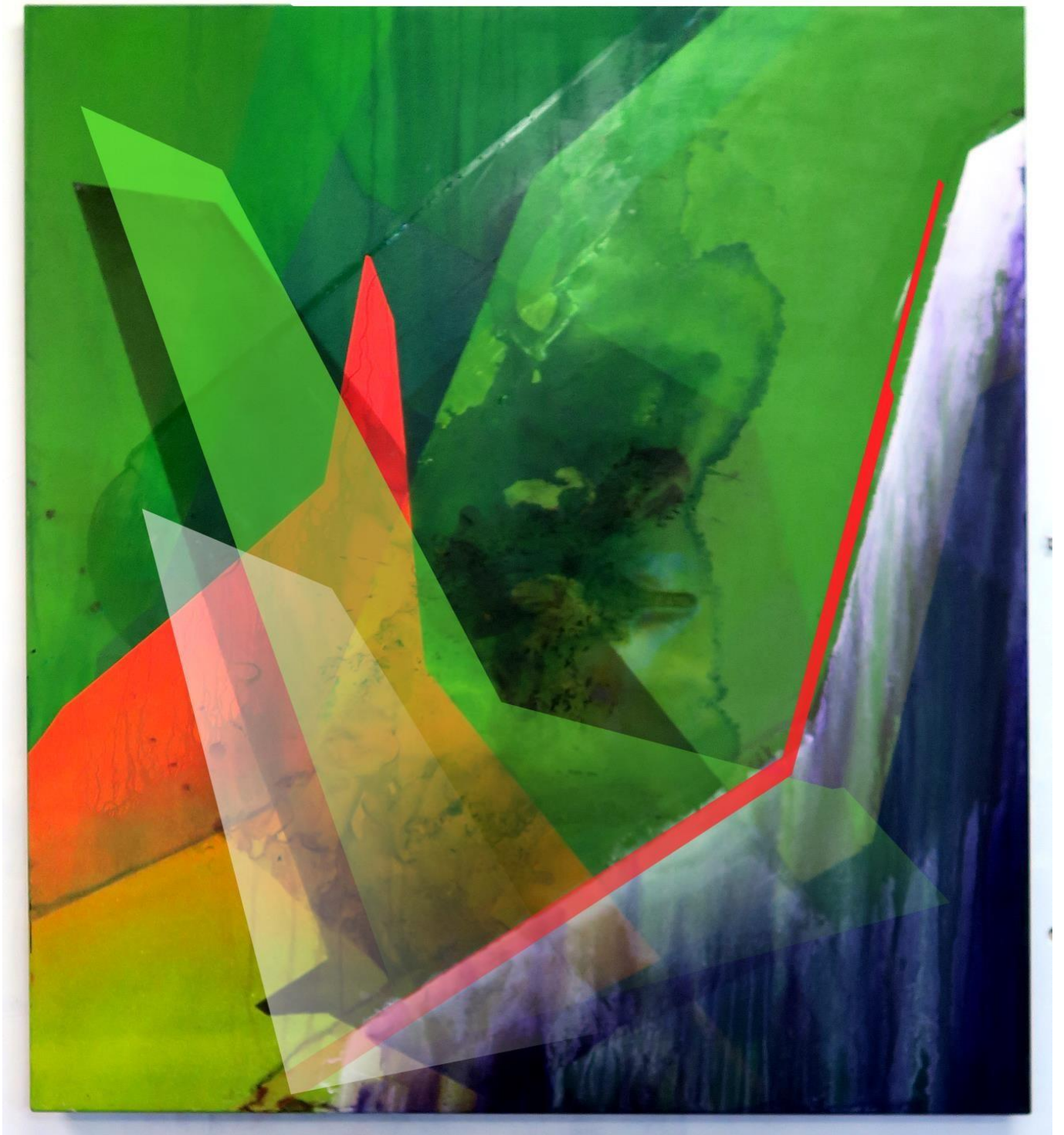
„rosemary's baby“

acrylics on canvas

145cm x 120cm

2021





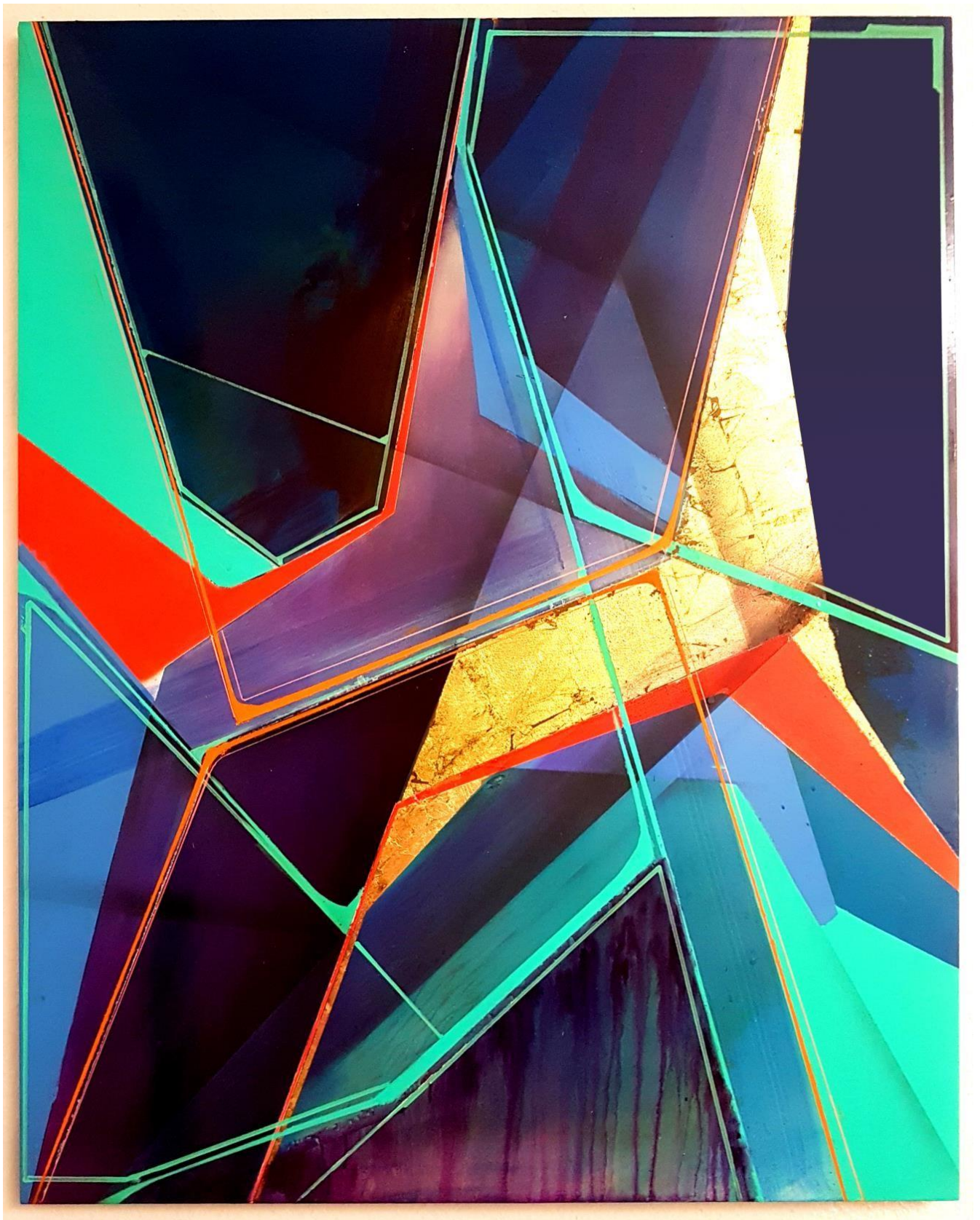
„forest grump“

acrylics on canvas

145cm x 120cm

2021





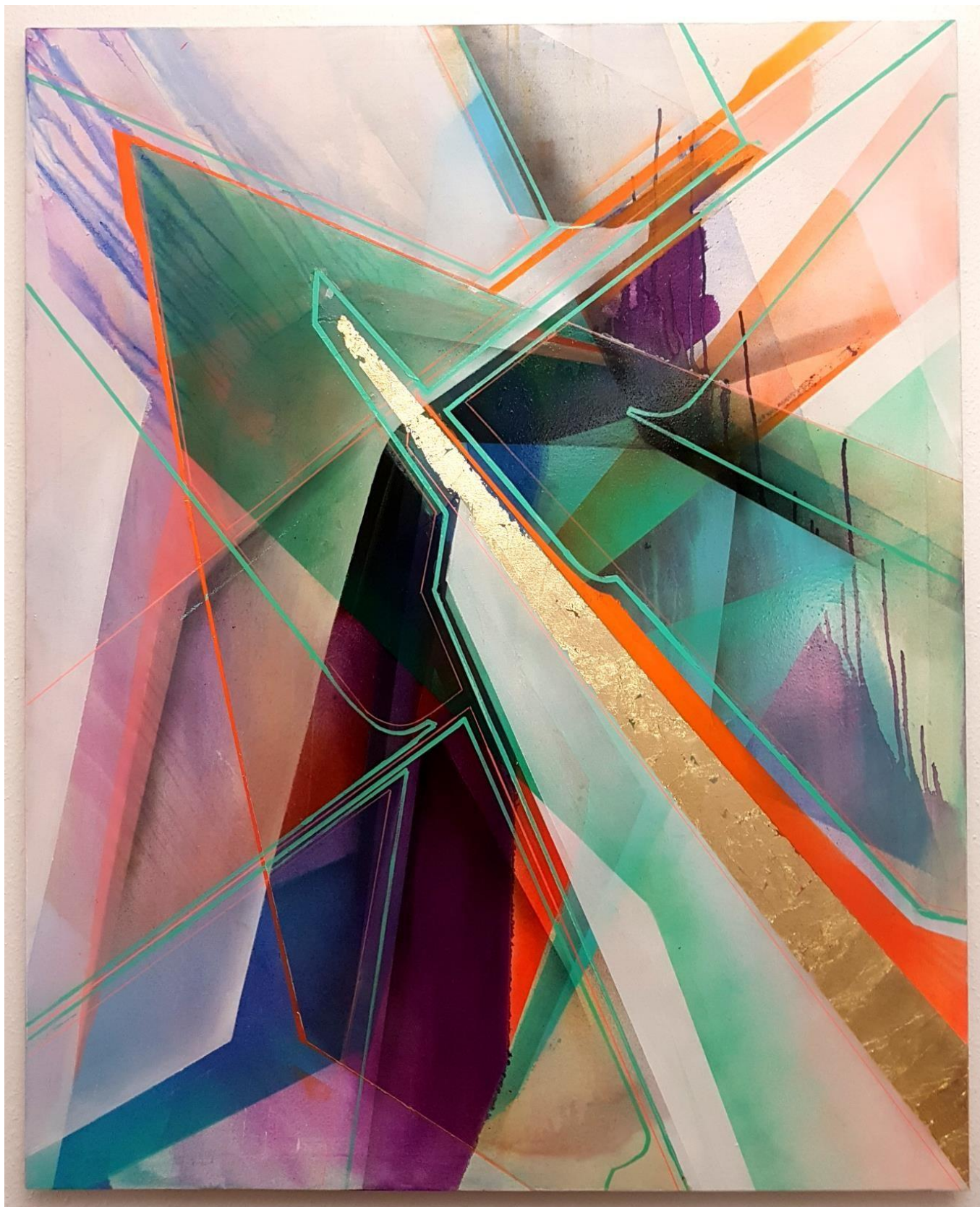
„Zwillingsnadel“

2019 acrylics/goldleaf on canvas

160cm x 88cm

2019





„spike“

acrylics/goldleaf on canvas  
160cm x 88cm  
2019





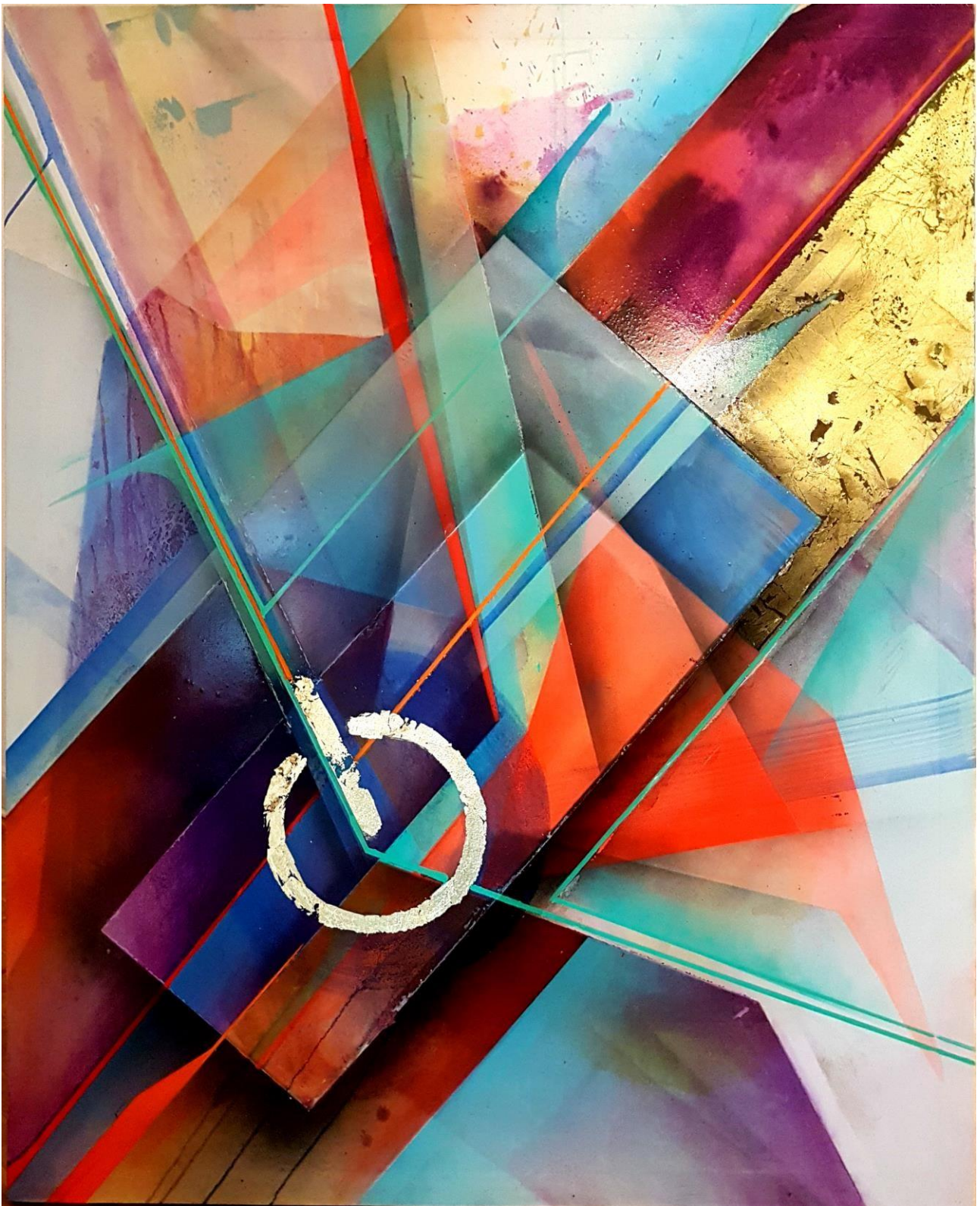
„on/off“

acrylics/goldleaf on canvas

160cm x 88cm

2019





„on/off“

acrylics/goldleaf on canvas  
160cm x 88cm  
2019





„venus of venice“

acrylics on canvas

200cm x 200cm

2019





**„centerpiece“**

**acrylics on canvas**

**400cm x 200cm**

**2019**





**„Der Prinz aus der Provinz“**

**acrylics on canvas**

**240cm x 155cm**

**2019**





**„double“**

**acrylics on canvas**

**388cm x 176cm**

**2019**